

PCMCIA Adaptor

Features

- Powerful class 1 Bluetooth 'plug-in' device
- fully approved standalone product – no approvals cost
- powerful TDK Terminal control centre
- TDK Configuration utility
- simple AT style command set control
- integrated antenna with up to 100m¹ range
- field upgradeable
- remotely configurable
- status LEDs
- Supported profiles – Serial, DUN²
- Fully compatible with amongst others Windows XP, Mac OS and embedded systems



Overview

blu²ⁱ PCMCIA Adaptor is the simplest method of upgrading any host with PCMCIA interface to Bluetooth Wireless Technology®. The adaptor takes advantage of TDK Systems' pre-approved blu²ⁱ Module and is controlled with the unique AT based command set.

With excellent ranges up to 100m¹ the blu²ⁱ PCMCIA Adaptor can connect to any Bluetooth device supporting the same profile; it can be used a cable replacement solution, a secure network connection via VPN or a remote monitoring / diagnostics device.

By presenting itself as a serial device the blu²ⁱ PCMCIA Adaptor can be installed on most operating systems by using standard operating system installed serial device drivers.

Target application areas

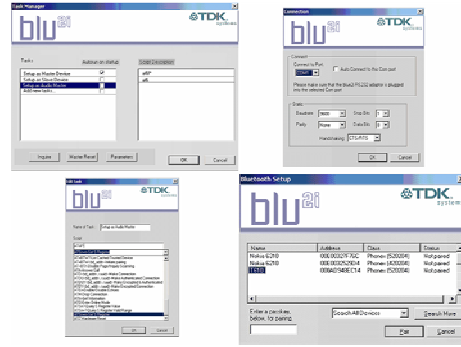
- | | |
|---|---|
| <ul style="list-style-type: none"> • cable replacement • retail • monitoring and diagnostics | <ul style="list-style-type: none"> • healthcare • automotive • secure VPN access |
|---|---|

Key benefits

- | | |
|---|--|
| <ul style="list-style-type: none"> • less design time required • excellent mobility between installations | <ul style="list-style-type: none"> • plug and play • easily configured |
|---|--|

TDK Configuration and TDK Terminal utilities

- Total control at a glance
- Easy to follow scripting
- Pair and connect
- Commissioning tool



Specifications

Hardware Feature	Implementation
Bluetooth Transmission	Class 1
Frequency	2.400 – 2.485 GHz
Max Transmit Power	+6dBm
Min Transmit Power	+0dBm
Receive Sensitivity	Better than -85dB
Antenna Gain	+2dBi
Range	100m free space ¹
Data Transfer rate	Up to 230Kbps (device should be preset to 115Kbps)
Physical size	102 x 54 x 5 (mm) – 30g
Fully Bluetooth pre-qualified	Bluetooth 1.1 product listing
Current consumption	100mA with idle mode (46mA)
Temperature Range	-20°C to +75 °C
Status lights	Indicating data transfer and connection states
Physical connection	16bit PCMCIA
Supported OSs (Applications)	Windows 98SE, 2000, ME and XP

Feature	Implementation
Fully Bluetooth approved	The blu ²ⁱ PCMCIA Adaptor is fully approved as a Bluetooth end product.
TDK Terminal control centre	Full of useful tools that help you understand, configure and change the way the blu ²ⁱ PCMCIA Adaptor works
TDK Configuration utility	Configure the blu ²ⁱ PCMCIA Adaptor using one of the scripts provided or create our own
Remotely configurable	Configuration of S Registers and other parameters possible from a remote device, such as a second blu ²ⁱ PCMCIA Adaptor.
Future proofed	The blu ²ⁱ PCMCIA Adaptor's firmware is field upgradeable
Onboard memory	Ten non-volatile 32 bit memory locations are available for general purpose use by the host and accessible through the S Register interface
Configurable UART	The onboard UART can be configured for either low latency or maximum throughput at baud rates from 1200 to 921600
Profile support	DUN ² , Serial
Status LEDs	The blu ²ⁱ PCMCIA Adaptor's two LEDs can be configured for different modes of operation e.g. to show Bluetooth connection state

¹ Free space range is dependent of the location, the type and number of other wireless devices in the area

² Must be approved in conjunction with manufacturer's hardware